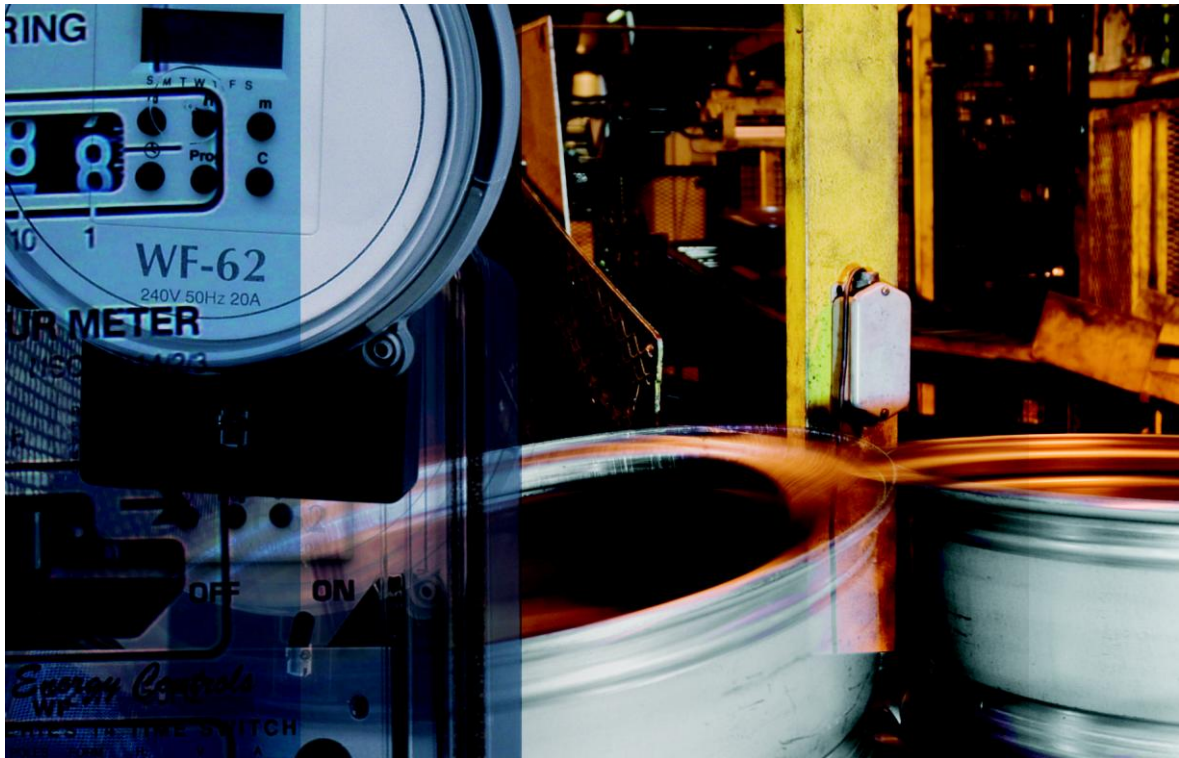


Time Switches & Timers



Time Switches	D1-D2
Timers & Programmable Controllers	D3
Price List	D4



www.wfenergycontrols.com.au; Sales Telephone: 1300 665 374; Sales Facsimile: 1300 665 394;
Sales: sales@wfenergycontrols.com.au; Technical: info@wfenergycontrols.com.au

Full current load control



The Heavy Duty Load Control Digital Time Switches are manufactured in rated currents of 20A, 30A and 50A. They have a single pole N/O contact, with the exception of the 50A unit which is also available with 2 x N/O contacts. The ratings are resistive. These time switches are typically used by Power Utilities for full load, off peak switching of domestic hot water, underfloor heating etc. These time switches meet the requirements of AS1284.7 (Australian Standard for Electricity Metering Part 7: Internal clocks for meters and load control devices). They can be used in any application where high accuracy full load switching is required. Back-up operation is provided on power failure to maintain switch timing.



Model WF62 20A – 1 Channel

- Operating voltage range of 216 to 264V AC
- Mains frequency range of 45Hz to 55Hz
- Power consumption: Approx. 2.4 watts
- Operating Temperature Range: -10C to +50C
- Relay Type: Electro-Mechanical
- Contact Arrangement: Single Pole normally open
- Contact Material: Silver Alloy
- Switching Capacity @ 240V AC: 20A resistive
- Relay Life Expectancy: 100,000 operations at full load
- Back-Up storage device: Rechargeable Nickel Metal Hydride
- Reserve Capacity: 1200 hours (standard configuration)
- Display Type: Liquid Crystal
- Clock Accuracy: Within +/- 0.1667 secs per day (as per AS1284-7 and IEC1038)
- Up to 6 'ON' and 'OFF' switching functions per day
- 24 hour or 7 day programmable
- Over voltage and over current protection circuits
- Plug-In housing
- Timer Mechanism (Plug-In section) may be used as a replacement for the older electro mechanical time clocks



Model WF17 30A – 1 Channel

- Operating voltage range of 216 to 264V AC
- Mains frequency range of 45Hz to 55Hz
- Power consumption: Approx. 2.4 watts
- Operating Temperature Range: -10C to +50C
- Relay Type: Electro-Mechanical
- Contact Arrangement: Single Pole normally open
- Contact Material: Silver Alloy
- Switching Capacity @ 240V AC: 30A resistive
- Relay Life Expectancy: 100,000 operations at full load
- Back-Up storage device: 1 F Supercap (* see options below)
- Reserve Capacity: Typical 8 days (minimum 5.5 days)
- Display Type: Liquid Crystal
- Clock Accuracy: Within +/- 0.1667 secs per day (as per AS1284-7 and IEC1038)
- Up to 6 'ON' and six 'OFF' switching functions per day
- 24 hour or 7 day programmable
- Over voltage and over current protection circuits
- Choice of bottom connect (4 terminal) or plug in housing (as per AS1284.1 and AS1284.4)

* Option: Battery options available

www.wfenergycontrols.com.au; Sales Telephone: 1300 665 374; Sales Facsimile: 1300 665 394;
Sales: sales@wfenergycontrols.com.au; Technical: info@wfenergycontrols.com.au

Full current load control



Model EC14 50A – 1 Channel

- Operating voltage range of 192 to 264V AC
- Mains frequency range of 45Hz to 55Hz
- Power consumption: Less than 1 watt
- Operating Temperature Range: -10C to +50C
- Relay Type: Impulse – Mechanical Latching
- Contact Arrangement: Single Pole normally open
- Switching Capacity @ 240V AC: 50A resistive
- Manual over ride facility
- Back-Up storage device: 1 F Super Capacitor
- Reserve Capacity: Typically 8 days (minimum 5.5 days)
- Display Type: Liquid Crystal
- Clock Accuracy: Within +/- 0.1667 secs per day (as per AS1284-7 and IEC1038)
- Up to 6 'ON' and 'OFF' switching functions per day
- 7 day 24 hour programmable
- Over voltage and over current protection circuits
- Choice of bottom connect (4 terminal) or plug in housing (as per AS1284.1 and AS1284.4)



Model 14/7D 50A – 2 Channel

- Operating voltage range of 192 to 264V AC
- Mains frequency range of 45Hz to 55Hz
- Power consumption: Less than 1 watt
- Operating Temperature Range: -10C to +50C.
- Relay Type: Impulse – Mechanical Latching
- Contact Arrangement: 2 x Single Pole normally open
- Switching Capacity @ 240V AC: 50A resistive
- Manual over ride facility
- Back-Up storage device: 2 x 1 F Super Capacitor
- Reserve Capacity: Typically 4.8 days (minimum 3 days)
- Display Type: Liquid Crystal
- Clock Accuracy: Within +/- 0.1667 secs per day (as per AS1284-7 and IEC1038)
- Up to 24 'ON' and 'OFF' switching functions per day
- 7 day 24 hour programmable
- Over voltage and over current protection circuits
- Standard 6 terminal bottom connect housing (as per AS1284.1)

www.wfenergycontrols.com.au; Sales Telephone: 1300 665 374; Sales Facsimile: 1300 665 394;
Sales: sales@wfenergycontrols.com.au; Technical: info@wfenergycontrols.com.au

Electronic Timers

The ETR Series of Crompton Greaves Electronic Timers feature stepless time settings; front terminals to facilitate wiring; DIN or BASE mounting; Silver Cadmium Oxide contacts; automatic reset on de-energisation; and smooth transition from star to delta amongst other features. Full specification brochures are available on request. These timers are suitable for many applications from single to multimode, star delta, single phasing and multifunction.



Item Code	Description	Mounting	Voltage / Current	Range
On - Delay				
CG-110DT4	ETR 175 On Delay	Base / Din Rail	110VAC 5A	0.3s - 30 hours
CG-120DT4	ETR 175 On Delay	Base / Din Rail	240VAC 5A	0.3s - 30 hours
Multimode				
CG-20MDT0	ETR 225 Multimode	Base / Din Rail	24-240VAC/DC 5A	0.1s - 10 hours
CG-40MFSD0	ETR 480 Multimode	Panel Mount	24-240VAC/DC 5A	0.1s - 10 hours
CG-74MDT0	ETR 780 Multimode	Base / Din Rail	415VAC - 440VAC 10A	0.1s - 10 hours
Star-Delta				
CG-20SDT0	ETR 225 Star Delta	Base / Din Rail	110VAC/240VAC Selectable 5A	3 sec - 120 sec
CG-40SFSD0	ETR 480 240V Star Delta	Panel Mount	110VAC/240VAC Selectable 5A	30s; 60s; 90s; 120s
CG-74SDT0	ETR 780 415V Star Delta	Base / Din Rail	415VAC - 440VAC 10A	30s; 60s; 90s; 120s
Single Phasing				
CG-SM-100	Single Phasing Relay			
Multifunction				
CG-VODDT0	Multifunction		110-240VAC or 24V AC/DC	0.1s - 10 hours

Electronic Time Switches



The Chrono and Pulse Time Switches provide precise timing programming for daily/weekly switching (Chrono) or Pulse switching (Pulse). The Chrono is Ideal for lighting, whilst the Pulse is ideal for sirens, school bells and other like applications.

Chrono

CG-62DDT0	8 ON / OFF Operations	Din Rail
-----------	-----------------------	----------

Pulse

CG-62DDT9	16 Pulse Operations	Din Rail
-----------	---------------------	----------

240V AC; 50/60 Hz; 16A Resistive; 6A Inductive; IP20; DIN Rail / Base mount; Clock Accuracy +/- 2 sec./day at 20C; Power reserve 1500hrs



The Astro is a Time Switch specifically designed for lighting applications. It has automatic programming to turn lights ON and OFF with reference to SUNRISE and SUNSET. Each of the 2 outputs can be independently programmed.

Astronomical

CG-T2DDT0	110 - 240VAC	Base / Din Rail
-----------	--------------	-----------------

110 - 240V AC; 50/60 Hz; 8A Resistive; 2 Channels; PC Interface for easy programming; Sunrise and Sunset calculation by selecting city in PC program; Auto calculation for daylight saving throughout Australia and New Zealand; Mid night Off hours switching; Alternative days switching for Channels 1 and 2; manual override

Programmable Controllers - Smart PLCs



Ideal in small automation for commercial and industrial applications such as auto packaging, printing, process, lighting etc. etc. Intergrated, ready to use, with a wide range of programmable functions including timers, counters, aux. relays and comparators. 8 digital inputs and 4 digital outputs - expandable to 32 in, 16 out.

Genie

CG-G7DDT8	Logic Relay Controller	Base / Din Rail
CG-GNDNN1	Software on PC	
CG-GNDNN2	Serial Interface Cable	
CG-GNDNN3	Memory Card	
CG-GNDNN4	Instruction Manual	
CG-G7DDT5D	Extention Module	

www.wfenergycontrols.com.au; Sales Telephone: 1300 665 374; Sales Facsimile: 1300 665 394; Sales: sales@wfenergycontrols.com.au; Technical: info@wfenergycontrols.com.au