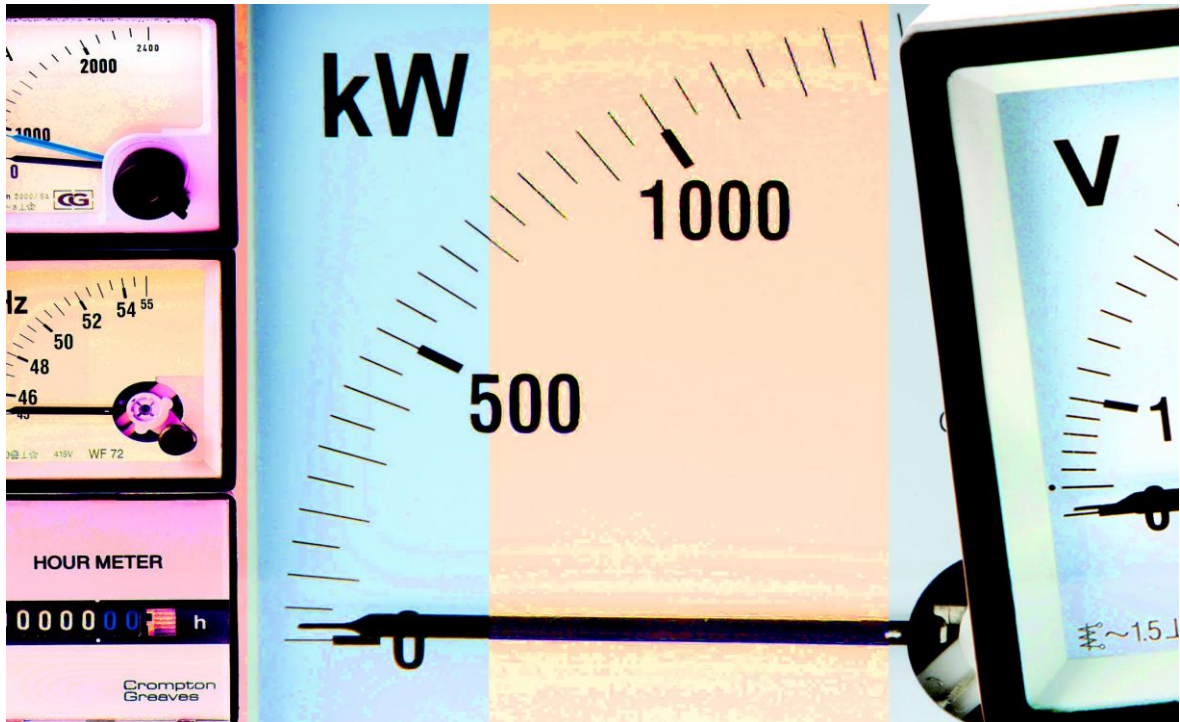


Meters



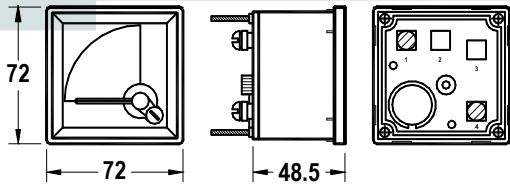
Analogue Panel Meters	C1-C2
Multifunction Digital Power Meters	C3-C4
Transformer Maximum Demand Indicator	C5
Kilowatt Hour Meters (Tariff)	C6
Price List	C7



www.wfenergycontrols.com.au; Sales Telephone: 1300 665 374; Sales Facsimile: 1300 665 394;
 Sales: sales@wfenergycontrols.com.au; Technical: info@wfenergycontrols.com.au

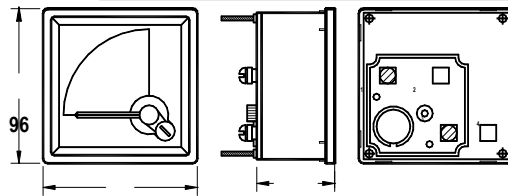
AC Ammeters – 72mm

Panel Meter Type	Catalogue Number	Panel Cutout mm	Scale
72mm AC Ammeter with Scale	WF72-0040A	72	40A
	WF72-0060A	72	60A
	WF72-0080A	72	80A
	WF72-0100A	72	100A
	WF72-0150A	72	150A
	WF72-0200A	72	200A
	WF72-0250A	72	250A
	WF72-0300A	72	300A
	WF72-0400A	72	400A
	WF72-0500A	72	500A
	WF72-0600A	72	600A
	WF72-0750A	72	750A
	WF72-0800A	72	800A
	WF72-1000A	72	1000A
	WF72-1500A	72	1500A
	WF72-2000A	72	2000A
	WF72-2500A	72	2500A
	WF72-3000A	72	3000A



AC Ammeters – 96mm

Panel Meter Type	Catalogue Number	Panel Cutout mm	Scale
96mm AC Ammeter with Scale	WF96-0100A	96	100A
	WF96-0150A	96	150A
	WF96-0200A	96	200A
	WF96-0250A	96	250A
	WF96-0300A	96	300A
	WF96-0400A	96	400A
	WF96-0500A	96	500A
	WF96-0600A	96	600A
	WF96-0750A	96	750A
	WF96-0800A	96	800A
	WF96-1000A	96	1000A
	WF96-1500A	96	1500A
	WF96-2000A	96	2000A
	WF96-2500A	96	2500A
	WF96-3000A	96	3000A



MDI Ammeters

Panel Meter Type	Catalogue Number	Panel Cutout mm	Scale
MDI Ammeter	CG-BIQ72	72	40A-3000A
	CG-BIQ96	96	100A-3000A

DC Ammeters

Panel Meter Type	Catalogue Number	Panel Cutout mm	Scale
DC Ammeter	CG-PQ72-10A	72	10A
	CG-PQ72-25A	72	25A
	CG-PQ72-40A	72	40A
	CG-PQ96-10A	96	10A
	CG-PQ96-25A	96	25A
	CG-PQ96-40A	96	40A



www.wfenergycontrols.com.au; Sales Telephone: 1300 665 374; Sales Facsimile: 1300 665 394; Sales: sales@wfenergycontrols.com.au; Technical: info@wfenergycontrols.com.au



AC Voltmeters

Panel Meter Type	Catalogue Number	Panel Cutout mm	Scale
AC Voltmeter	WF72-300VM	72	300V
	WF72-500VM	72	500V
	WF96-300VM	96	300V
	WF96-500VM	96	500V

DC Voltmeters

DC Voltmeter	CG-PQ72-15V	72	15V
	CG-PQ72-25V	72	25V
	CG-PQ72-60V	72	60V
	CG-PQ96-15V	96	15V
	CG-PQ96-25V	96	25V
	CG-PQ96-60V	96	60V

Frequency Meters

Frequency Meters	WF72-FRM	72	50Hz
	WF96-FRM	96	50Hz

Power Factor Meters

Power Factor	WF72-PFM	72	50Hz
	WF96-PFM	96	50Hz

Kilowatt Meters

Kilowatt Meters	WF72-0200kW	72	200kW
	WF72-0400kW	72	400kW
	WF72-1000kW	72	1000kW
	WF96-0400kW	96	400kW
	WF96-1000kW	96	1000kW
	WF96-1500kW	96	1500kW



Hours Run Meter

Panel Meter Type	Catalogue Number	Panel Cutout mm	
Hours Run	CG-HM-700	45	

MultiMax Series 96



The MultiMax Series 96 offers all the measurement capabilities required to monitor any electrical parameters including energy usage in a standard 96 x 96mm case.

Available in 4 versions:

- 96F basic version for V, A, MDI, Hz, kVA
- 96FE basic version for V, A, Hz, kWh with optional pulsed output
- 96PEC multifunction with optional pulsed and / or RS485 modbus outputs
- 96PECH multifunction with THD and optional pulsed and / or RS485 modbus outputs

Applications:

- Panel Instrumentation
- Tenancy or allocated Sub-Metering
- Remote Monitoring of electrical characteristics.
- Energy Management
- Harmonic Monitoring

Features:

- With an 80mm depth the MultiMax range is suitable for panel mounting
- Displays 3 measurements at a time for convenience
- Energy Class 1 as defined by IEC 61036 making it ideal for sub metering, cost allocation or energy management

MultiMax Series 96

Item	Measurement	Symbol	96F	96FE	96PEC	96PECH
1	Technical Specifications					
2	3 Phase, 4 Wire		•	•	•	•
3	Input Voltage 415L-L (240V L-N)		•	•	•	•
4	Input Current 5A		•	•	•	•
5	AC Auxiliary Voltage 230V AC		•	•	•	
6	Pulsed Output			o	o	o
7	Analogue Outputs				o	
8	Serial communication Modbus (RS485)				o	o
9	Volts L1-N	V	•	•	•	•
10	Volts L2-N	V	•	•	•	•
11	Volts L3-N	V	•	•	•	•
12	Volts L1-L2	V	•	•	•	•
13	Volts L2-L3	V	•	•	•	•
14	Volts L3-L1	V	•	•	•	•
15	System Current	A	•	•	•	•
16	Current L1	A	•	•	•	•
17	Current L2	A	•	•	•	•
18	Current L3	A	•	•	•	•
19	Neutral Current	A	•	•	•	•
20	Frequency	Hz	•	•	•	•
21	System Active Power	kW			•	•
22	Active Power L1	kW			•	
23	Active Power L2	kW			•	
24	Active Power L3	kW			•	
25	System Re-active Power	KVAR			•	•
26	Re-active Power L1	KVAR			•	
27	Re-active Power L2	KVAR			•	
28	Re-active Power L3	KVAR			•	
29	System Apparent Power	kVA	•		•	•
30	Apparent Power L1	kVA			•	
31	Apparent Power L2	kVA			•	
32	Apparent Power L3	kVA			•	
33	System Power Factor	pf			•	•
34	Power Factor L1	pf			•	
35	Power Factor L2	pf			•	
36	Power Factor L3	pf			•	
37	Phase Angle L1	deg			•	
38	Phase Angle L2	deg			•	
39	Phase Angle L3	deg			•	
40	Energy Values					
41	Active Energy - Import kWh (8 digit resolution)	kWh		•	•	•
42	Active Energy - Export kWh (8 digit resolution)	kWh		•	•	
43	Re-Active Energy - Import kVARh (8 digit resolution)	KVARh			•	•
44	Re-Active Energy - Export kVARh (8 digit resolution)	KVARh			•	
45	Import kVAh (8 digit resolution)	KVAh			•	
46	Export kVAh (8 digit resolution)	KVAh			•	
47	Demand Values					
48	Total System Current Demand	A	•			•
49	Total System Maximum Current Demand (MDI)	A	•			•
50	System kW Demand	kW				•
51	System kW Demand Maximum	kW				•
52	Total System kVA Demand	kVA	•			
53	Total System Maximum kVA Demand	kVA	•			
56	Power Quality					
57	%THD of System Voltage					•
58	%THD of System Current					•
59	%THD of all 3 L-N voltages					•
60	%THD of all 3 Line Currents					•

www.wfenergycontrols.com.au; Sales Telephone: 1300 665 374; Sales Facsimile: 1300 665 394;
Sales: sales@wfenergycontrols.com.au; Technical: info@wfenergycontrols.com.au

Distribution transformer maximum demand indicators



Type 73D Maximum Demand Indicator mounted on pole adjacent transformer.

The Thermal maximum Demand Indicators are manufactured in single phase indoor and outdoor units and three phase outdoor units. They are generally used by Power Utilities to measure the maximum demand (load) typically scaled for the HV current on a Street Network Distribution Transformer. These MDIs have been designed to be governed by the same thermal law that determines the heating of the load to which the transformer is connected. Features include manual resetting of the maximum demand pointer, ease of mounting and single or dual (reversible) scales. CTs are available to suit standard bushings.



Model 70D – Single Phase Indoor

Typically used for monitoring one phase of a Kiosk (Pad mount) transformer substation, these instruments are fitted with bottom connect terminals behind a cover, and external reset mechanism.



Model 70D/OD – Single Phase Outdoor

With an IP56 rating, the 70D outdoor is ideal where single phase monitoring of an outdoor transformer substation is required. The weather resistant cases are fitted with an anodised aluminium mounting bracket, and come standard with 2m fly leads.



Model 73D – Three Phase Outdoor

Typically used for monitoring three phase currents of an outdoor pole mount transformer substation, these instruments have a separate bottom connect terminal chamber for ease of connection and testing without removing the main cover. The 20mm removable plugs, on either side of the terminal compartment, allow access to the 6mm dia stud terminals.

WF Energy Controls has the ability to source all types of kWh Meters to suit all metering requirements, including

- Tenancy or allocated Sub-Metering
- Energy Management
- Remote monitoring of electrical services

Types of Meters available include

- Single Phase
- 3 Phase, 415V, 3 wire
- 3 Phase, 415V, 4 wire
- 40A to 3000A
- DIN Rail, or Base mount
- Class 0.5, 1.0 & 2.0

Phone 1300 665 374 for assistance in choosing kWh Meters and matching CTs from WF Energy Control.

www.wfenergycontrols.com.au; Sales Telephone: 1300 665 374; Sales Facsimile: 1300 665 394;
Sales: sales@wfenergycontrols.com.au; Technical: info@wfenergycontrols.com.au



August 2011